



**DEVELOPMENT SERVICES
DEPARTMENT**
P.O. Box 307
Prosper, TX 75078
Phone: 972-346-3502
Fax: 972-347-9006

Development and Zoning Submittals – February 2010

Development Applications – Residential

Case #: D10-0003 (Whitley Place, Phase 2A, Block H, Lots 1-13, Block D, Lots 25-36 & Lot 2X)
Type of Application: Final Plat
Description and Location: A final plat of Whitley Place, Phase 2A, being 25 single family residential lots, on 7.7± acres, located on the west side of Custer Road, 1,000± feet south of Prosper Trail.

Development Applications – Non-Residential

Case #: D10-0004 (UHaul Center Parking Improvements)
Type of Application: Site Plan
Description and Location: A site plan of UHaul Center Parking Improvements, on 5.4± acres, located on the north side of U.S. 380, 2,000± feet west of Dallas Parkway.

Zoning Applications

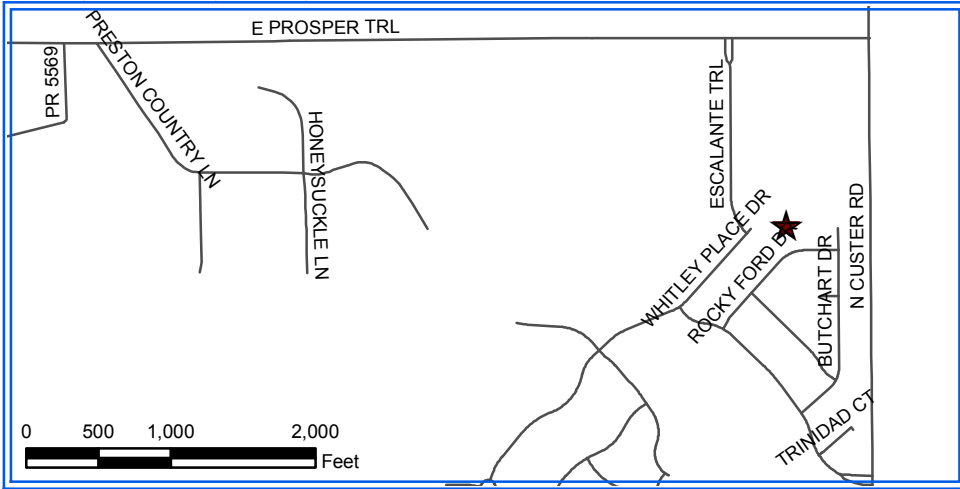
Case #: Z10-0001 (Preston 48, Block A, Lot 5)
Type of Application: Planned Development-Retail
Description and Location: A request to rezone 1.1± acres, located on the south side of Prosper Trail, 500± feet west of Preston Road, from Commercial (C) to Planned Development-Retail (PD-R).

Case #: Z10-0002 (701 E. First Street)
Type of Application: Downtown Office
Description and Location: A request to rezone 0.7± acre, located on the northeast corner of Lane Street and First Street, from Single Family-15 (SF-15) to Downtown Office (DTO).

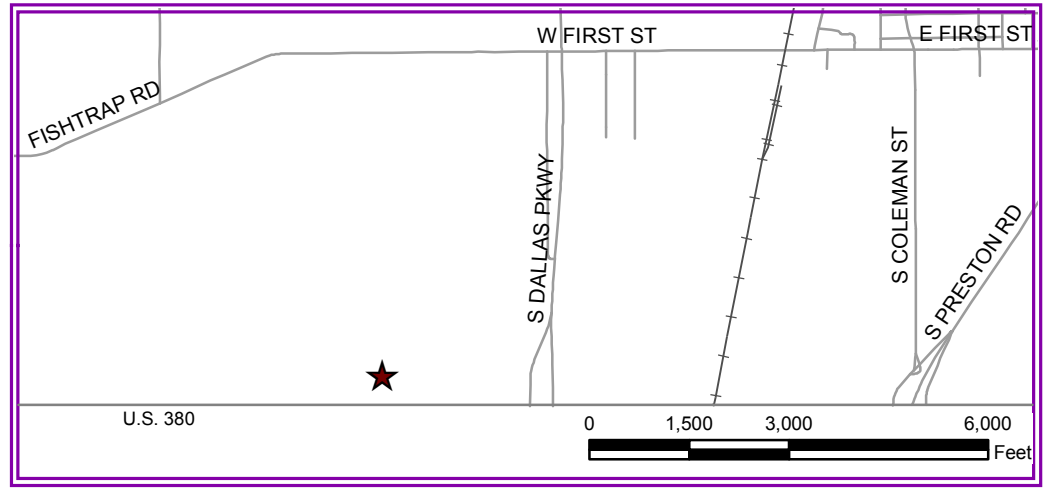
The public may view the above listed applications and associated plans by scheduling an appointment with Melanie Videan, Planning Technician at (972) 346-3502 or melanie_videan@prospertx.gov.

TOWN OF PROSPER February 2010 Applications

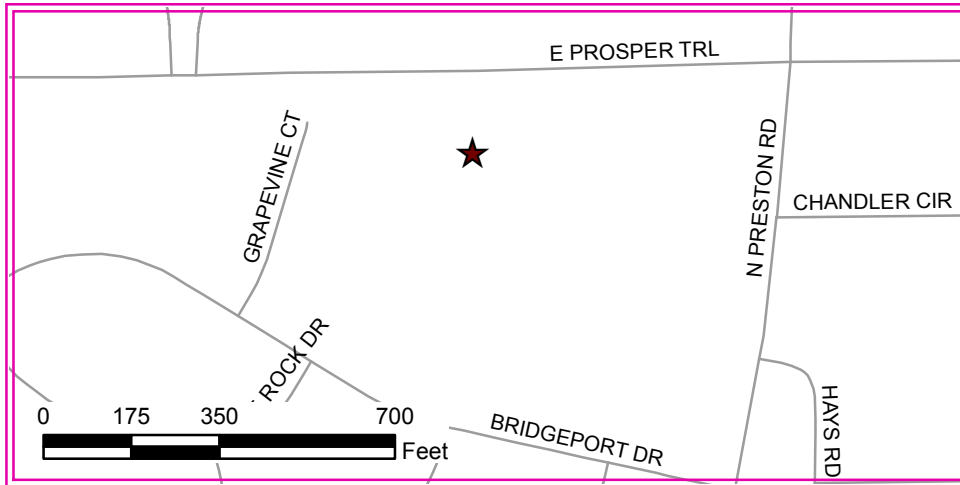
D10-0003: Whitley Place, Ph. 2A, Blk. H, Lots 1-13, Blk. D, Lots 25-36 & Lot 2X



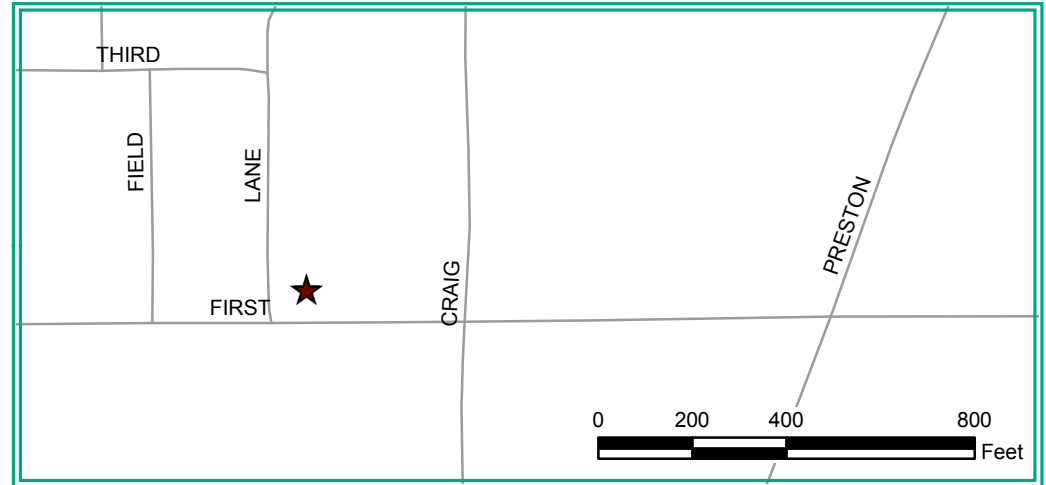
D10-0004: UHaul Center Parking Improvements



Z10-0001: Preston 48, Blk. A, Lot 5



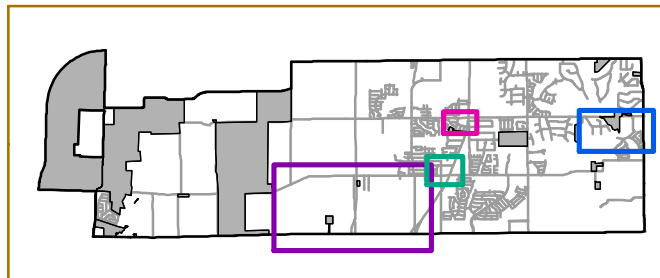
Z10-0002: 701 E. First St.



DISCLAIMER



The Town of Prosper has prepared this map or information for internal purposes only. It is made available under the Public Information Act. Any reliance on this map or information is AT YOUR OWN RISK. The Town of Prosper assumes no liability for any errors, omissions, or inaccuracies in the map or information regardless of the cause of such or for any decision made, action taken, or action not taken in reliance upon any maps or information provided herein. The Town of Prosper makes no warranty, representation, or guarantee of any kind regarding any maps or information provided herein or the sources of such maps or information and DISCLAIMS ALL REPRESENTATIONS AND WARRANTIES, EXPRESSED AND IMPLIED, including the implied warranties of merchantability and fitness for a particular purpose.



Legend

- ★ Application Locations
- +— Railroad

