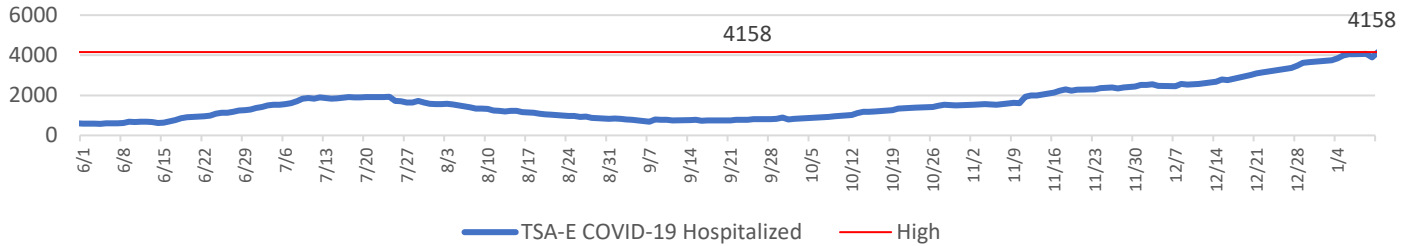


COVID 19 Daily Statistics

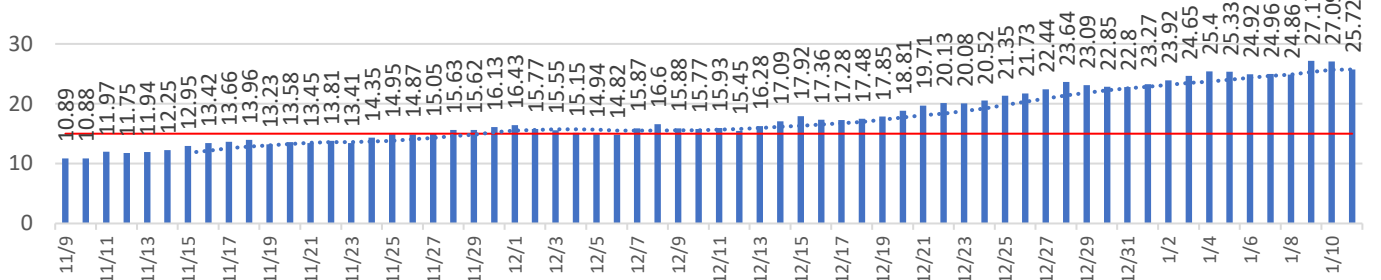
13-Jan-21

TSA-E 2020 Population	8,080,080
TSA-E Lab-Confirmed COVID-19 Patients Currently in Hospital	4,158
TEXAS Hospital Lab-Confirmed COVID-19 Patients Currently in Hospital	14,218

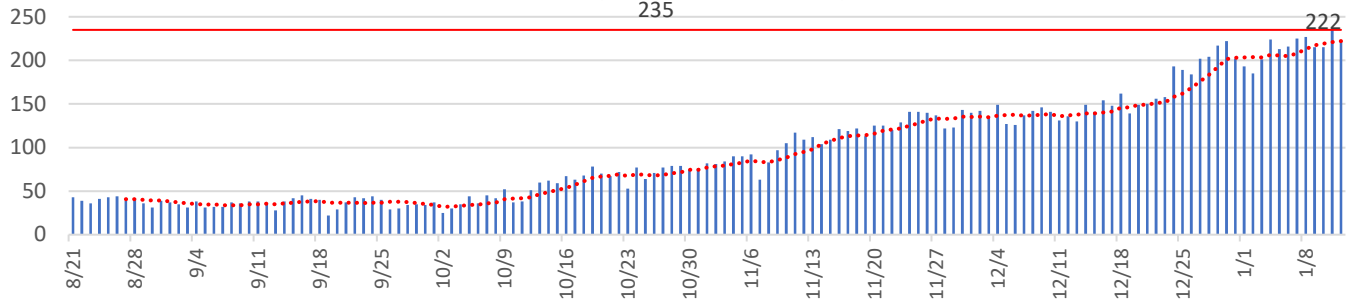
TSA-E COVID-19 Hospitalized



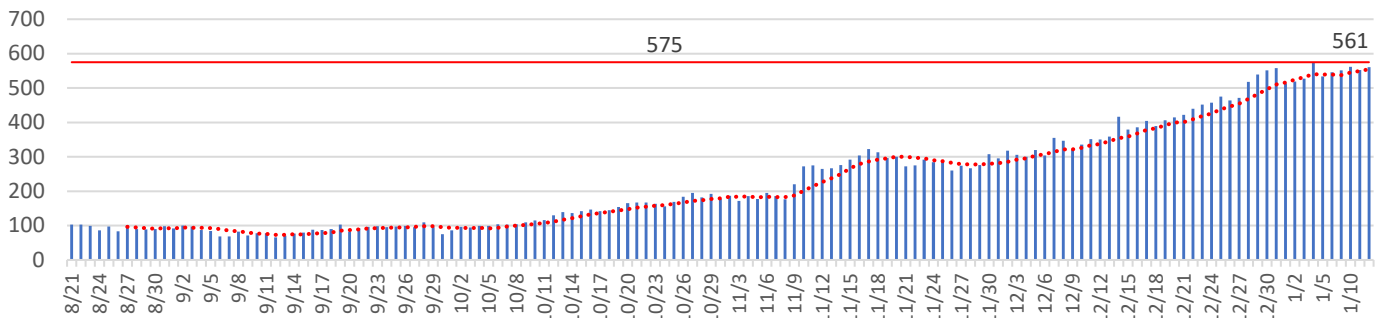
TSA-E COVID Hospitalizations out of Total Hospital Capacity (Percent)



Denton County COVID-19 Hospitalized



Collin County COVID-19 Hospitalized



COVID 19 Daily Statistics

Collin County	
Active Cases	5,994
Confirmed Cases	51,840
Recovered Cases	45,846
Deceased	428

Prosper (Collin County Side)	
Active Cases	155
Confirmed Cases	1277
Recovered Cases	1122
Deceased	Not Available

Denton County	
Active Cases	13,495
Confirmed Cases	44,158
Recovered Cases	30,426
Deceased	237

Prosper (Denton County Side)	
Active Cases	32
Confirmed Cases	140
Recovered Cases	107
Deceased	1

Town of Prosper Total	
Active Cases	187
Confirmed Cases	1417
Recovered Cases	1229
Deceased	1

Data Sources:

Texas Department of State Health Services – Trauma Service Area Hospital Data

<https://txdshs.maps.arcgis.com/apps/opsdashboard/index.html#/0d8bdf9be927459d9cb11b9eae6101f>

Texas Department of State Health Services - Texas Case Counts

<https://txdshs.maps.arcgis.com/apps/opsdashboard/index.html#/ed483ecd702b4298ab01e8b9cafc8b83>

Collin County Update Novel Coronavirus (COVID-19)

<https://experience.arcgis.com/experience/c00baf45f12a4899aae1c812e29d6cde>

Denton County COVID-19 Statistics

<https://gis-covid19-dentoncounty.hub.arcgis.com/pages/covid-19cases>

Denton County Case Statistics by Geographic Area

<https://dentoncounty.maps.arcgis.com/apps/opsdashboard/index.html#/4ec6e734bb8e4b37ab7417b2dfc49976>